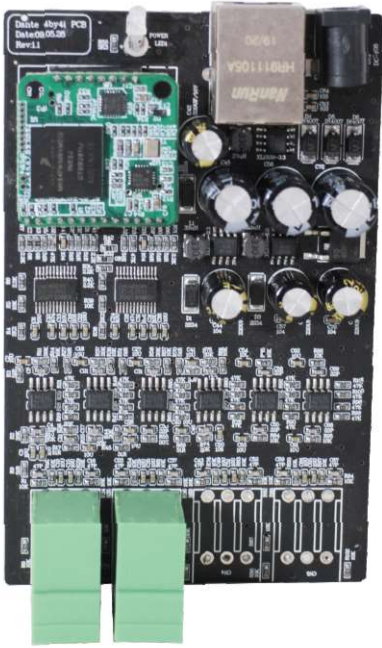


Dante 2 In 2 Out PCB Board

Dante 4 In 4 Out PCB Board



Dante 2 PCB

Dante 4 PCB

Features:

- ▶ Ideal interface to increase the number of microphones or AUX inputs
- ▶ 2/4 balanced line outputs can be used simultaneously, and all audio channels are used with Dante network.
- ▶ 2/4 balanced MIC/AUX inputs, and also 2/4 outputs using phoenix connector
- ▶ CAT5/6 connector to link with Dante network and controlled by Audinate

MODEL	Dante 2 PCB	Dante 4 PCB
Input	2 balanced/unbalanced input	4 balanced/unbalanced input
Input Impedance	Greater than 1800 Ω	Greater than 1800 Ω
Max. Input Level	+8dbu@ 0dB gain	+8dbu@ 0dB gain
Output	2 balanced/unbalanced output	4 balanced/unbalanced output
Output Impedance	200 Ω balance	200 Ω balance
Max. Output Level	+20dbu balance	+20dbu balance
Freq. Response	20~20KHz, ±1dB	20~20KHz, ±1dB
THD	Less than 0.02%	Less than 0.02%
Power Requirements	12V DC	12V DC
Dimensions	115x70x26 mm	115x70x26 mm