

**Class D Mixer Amplifier with Audio Sources, Dante and DSP**

**Description**

MA-1000TD V2 is a multi-function network DSP digital High-Z and low-Z power amplifier 2\*500W@4Ω, 2\*300W@8Ω, bridged 1000W@8Ω, low-Z 100V-1000W@10Ω. It can remotely monitor the status of power amplifier, set compression Controller, limiter, noise gate, parametric equalization, matrix routing, delay and other DSP functions in real time. Simple software interface provides customers with simple setup and operation experience, and a variety of connection methods ensure its good configurability and expandability, suitable for various applications, such as performance center, theatre, gallery, hotel, conference center, shopping center, retail store, restaurant, etc.

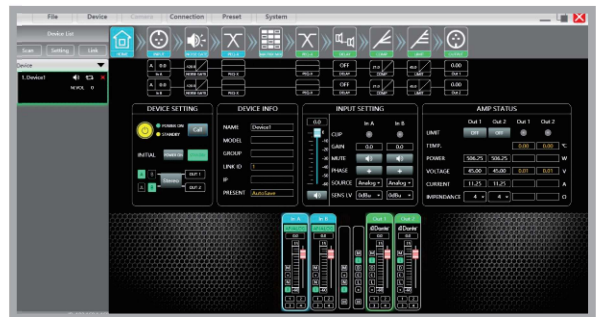


**Features:**

- ▶ Flexible Dante Network amplifier with DSP with both 100V line and 8ohm Software selectable
- ▶ Local analog audio input selection
- ▶ Built-in DSP digital processor
- ▶ Network TCP/IP control for multiple device management
- ▶ Support multiple on line modes: USB, TCP/IP, RS232, RS485
- ▶ Real-time remote monitoring of power amplifier working status
- ▶ Support balanced XLR input and unbalanced RCA input
- ▶ Support stereo, bridge, mono, free matrix mode, one-button switching

**Ordering code:**

- MA-1000T V2**  
2X500W mixer amplifier with DSP
- MA-1000TD V2**  
2X500W mixer amplifier with DSP and Dante
- MA-2000T V2**  
4X500W mixer amplifier with DSP
- MA-2000TD V2**  
4X500W mixer amplifier with DSP and Dante



Control software

MODEL	MA-1000T V2/MA-1000TD V2	MA-2000T V2/MA-2000TD V2
Output Power	2*500w at 4ohm; or 1*600W at 8ohm bridged, 1*600W 100V line bridged, 1*600W 70V line bridged	4*500w at 4ohm; or 2*600W at 8ohm bridged, 2*600W 100V line bridged, 2*600W 70V line bridged
Output	100V or 4 – 16ohm, DSP software selectable	
Frequency Response	20 – 20,000 Hz, +/- 0.5dB at 1W, 8ohm	
THD	Less than 0.1% at 1W to full load	
S/N Ratio	6dBu and 0dBu at 94dB	
Input EQ	5 Bands	
Output EQ	9 Bands	
Cooling	Internal 12VDC fan, extensive heat sinking	
Display	240*240 res, IPS colored	
Dante interface	2 Channel	
Power Requirements	180-264V AC, 50/60 Hz	100-240V AC, 50/60 Hz
Dimensions	44.5(H) x 483(W) x 330(D) mm	
Built-in Dimensions	1 U rack 19 inch	
Finish	Panel: Aluminum plate, black; Case: steel plate, black	