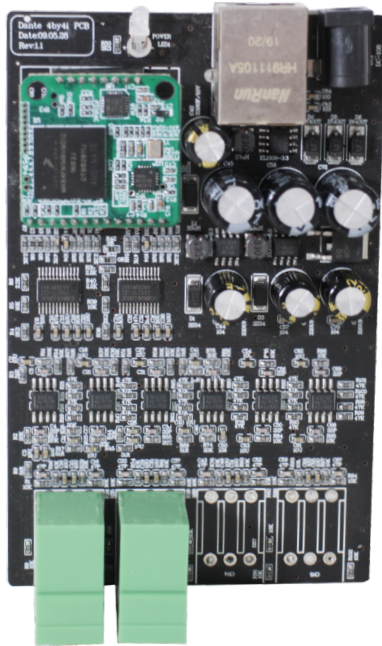
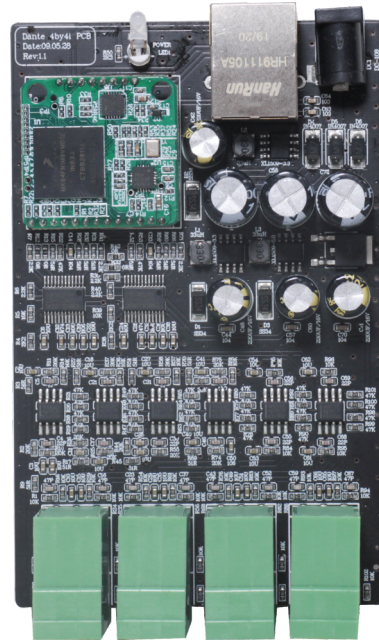


**Dante I/O**
**Dante 2 In 2 Out PCB Board**

**Dante 2 PCB**
**Dante 4 In 4 Out PCB Board**

**Dante 4 PCB**
**Features:**

- ▶ Ideal interface to increase the number of microphones or AUX inputs
- ▶ 2/4 balanced line outputs can be used simultaneously, and all audio channels are used with Dante network.
- ▶ 2/4 balanced MIC/AUX inputs, and also 2/4 outputs using phoenix connector
- ▶ CAT5/6 connector to link with Dante network and controlled by Audinate

| <b>MODEL</b>       | <b>Dante 2 PCB</b>           | <b>Dante 4 PCB</b>           |
|--------------------|------------------------------|------------------------------|
| Input              | 2 balanced/unbalanced input  | 4 balanced/unbalanced input  |
| Input Impedance    | Greater than 1800 Ω          | Greater than 1800 Ω          |
| Max. Input Level   | +8dbu@ 0dB gain              | +8dbu@ 0dB gain              |
| Output             | 2 balanced/unbalanced output | 4 balanced/unbalanced output |
| Output Impedance   | 200 Ω balance                | 200 Ω balance                |
| Max. Output Level  | +20dbu balance               | +20dbu balance               |
| Freq. Response     | 20~20KHz, ±1dB               | 20~20KHz, ±1dB               |
| THD                | Less than 0.02%              | Less than 0.02%              |
| Power Requirements | 12V DC                       | 12V DC                       |
| Dimensions         | 115x70x26 mm                 | 115x70x26 mm                 |