

Dante Speaker

Dante Ceiling Speaker

Description

Dante DP PoE Speaker can realize its multifunction the POE power supply or 24VDC, audio transmission and signal control via a RJ45 Ethernet port. It can obtain power supply from any Ethernet switch of 802.3 or above standard.

Over Dante™ Ethernet that transmits 24-bit audio (44.1K/48KHz) and its control signal can be routed through the Dante™ Controller. All these functions can perform remotely on the PC or Mac by Dante Controller Software.

Features:

- ▶ Dante network compatibility for seamless integration and easy audio distribution in networked environments.
- ▶ Power over Ethernet (PoE) capability for simplified installation and reduced cable clutter.
- ▶ Built-in Digital Signal Processing (DSP) for enhanced audio performance, providing clear and balanced sound reproduction. (DANTE DP 830R POE with DSP)
- ▶ Kevlar driver construction ensures durability and delivers high-quality audio with accurate and natural sound reproduction. (DANTE DP 830R POE with DSP)

Ordering Code

Dante DP 615:

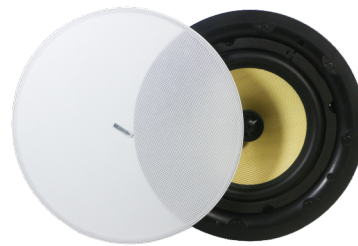
15W Dante 6-inch Metal Ceiling Speaker with External 24V DC power supply

Dante DP 615 POE:

15W Dante 6-inch Metal Ceiling Speaker with POE power supply

DANTE DP 830R POE with DSP:

30W Dante 8-inch Ceiling Speaker with DSP and POE power supply



Dante DP 615POE



DANTE DP 830R POE with DSP

| MODEL | Dante DP 615POE | DANTE DP 830R POE with DSP |
|---------------------------|------------------------------------|------------------------------------|
| Input Interface | RJ-45 | RJ-45 |
| Audio Input Signal | Dante™ Balanced amplified signal | Dante™ Balanced amplified signal |
| Cable | Cat-5 or above | Cat-5 or above |
| Output Power | 15W | 30W |
| Transmission Rate | 100M/1000M bps | 100M/1000M bps |
| Frequency Range | 80Hz – 18kHz | 65Hz–20kHz |
| Sensitivity | 91dB 1w/1m | 89dB |
| Sound Pressure Level | 106dB (peak) | 104dB (peak) |
| Total Harmonic Distortion | <0.30% | <0.30% |
| Signal to Noise Ratio | >100dB | >100dB |
| Noise Floor | <200uV | <200uV |
| System Efficiency | >70% | >70% |
| Enclosure | Metal | Metal |
| Operation Temperature | -10 to 50 Degree | -10 to 50 Degree |
| Color | White | White |
| Dimension | Dia 200 x 90mm | Dia 280x180mm |
| Net Weight | 0.95kg | 2.5kg |